



# TRANSPORTATION IMPROVEMENT PROGRAM

FY 2008 – FY 2011

FINAL  
May 22, 2007

Federal Highway  
Administration  
Section

Surface Transportation Program

And

Transportation Enhancement

# AMES AREA METROPOLITAN PLANNING ORGANIZATION

## FEDERAL FISCAL YEARS 2008-2011 TRANSPORTATION IMPROVEMENT PROGRAM

### NEW PROJECT INFORMATION FORM

Project Sponsor Government: City of Ames

Federal Funding Source:

- Surface Transportation Program  
 Highway Bridge Replacement and Rehabilitation Program

Federal Fiscal Year:

- Federal Fiscal Year 2008 (October 1, 2007 – September 30, 2008)  
 Federal Fiscal Year 2009 (October 1, 2008 – September 30, 2009)  
 Federal Fiscal Year 2010 (October 1, 2009 – September 30, 2010)  
 Federal Fiscal Year 2011 (October 1, 2010 – September 30, 2011)

Route or Street Name: Area Wide

Termini: \_\_\_\_\_

Bridge Number (For Bridge Projects Only): \_\_\_\_\_

Length: \_\_\_\_\_ miles

Type of Work: **Statewide Urban Design and Specifications Manual (SUDAS)**

Map (*Please include a map indicating project location.*)

### PROJECT COST INFORMATION

Total Estimated Cost: \$ 3,056

Federal-Aid: \$ 4,593

Local Match: \$ 0

Other: \$ ---

# AMES AREA METROPOLITAN PLANNING ORGANIZATION

## FEDERAL FISCAL YEARS 2008-2011 TRANSPORTATION IMPROVEMENT PROGRAM

### NEW PROJECT INFORMATION FORM

Project Sponsor Government: City of Ames

Federal Funding Source:

- Surface Transportation Program  
 Highway Bridge Replacement and Rehabilitation Program

Federal Fiscal Year:

- Federal Fiscal Year 2008 (October 1, 2007 – September 30, 2008)  
 Federal Fiscal Year 2009 (October 1, 2008 – September 30, 2009)  
 Federal Fiscal Year 2010 (October 1, 2009 – September 30, 2010)  
 Federal Fiscal Year 2011 (October 1, 2010 – September 30, 2011)

Route or Street Name: Area Wide

Termini: \_\_\_\_\_

Bridge Number (For Bridge Projects Only): \_\_\_\_\_

Length: \_\_\_\_\_ miles

Type of Work: **Pavement Management System**

Map (*Please include a map indicating project location.*)

### PROJECT COST INFORMATION

Total Estimated Cost: \$ 5,247

Federal-Aid: \$ 5,247

Local Match: \$ 0

Other: \$ ---

# AMES AREA METROPOLITAN PLANNING ORGANIZATION

## FEDERAL FISCAL YEARS 2008-2011 TRANSPORTATION IMPROVEMENT PROGRAM

### NEW PROJECT INFORMATION FORM

Project Sponsor Government: City of Ames

Federal Funding Source:

- Surface Transportation Program  
 Highway Bridge Replacement and Rehabilitation Program  
 Statewide Transportation Enhancement

Federal Fiscal Year:

- Federal Fiscal Year 2008 (October 1, 2007 – September 30, 2008)  
 Federal Fiscal Year 2009 (October 1, 2008 – September 30, 2009)  
 Federal Fiscal Year 2010 (October 1, 2009 – September 30, 2010)  
 Federal Fiscal Year 2011 (October 1, 2010 – September 30, 2011)

Route or Street Name: **Ames Southeast Entryway**

Termini: US Hwy 30, Southeast 16<sup>th</sup> Street, US 30/ South Dayton Avenue Interchange

Bridge Number (For Bridge Projects Only): \_\_\_\_\_

Length: N/A miles

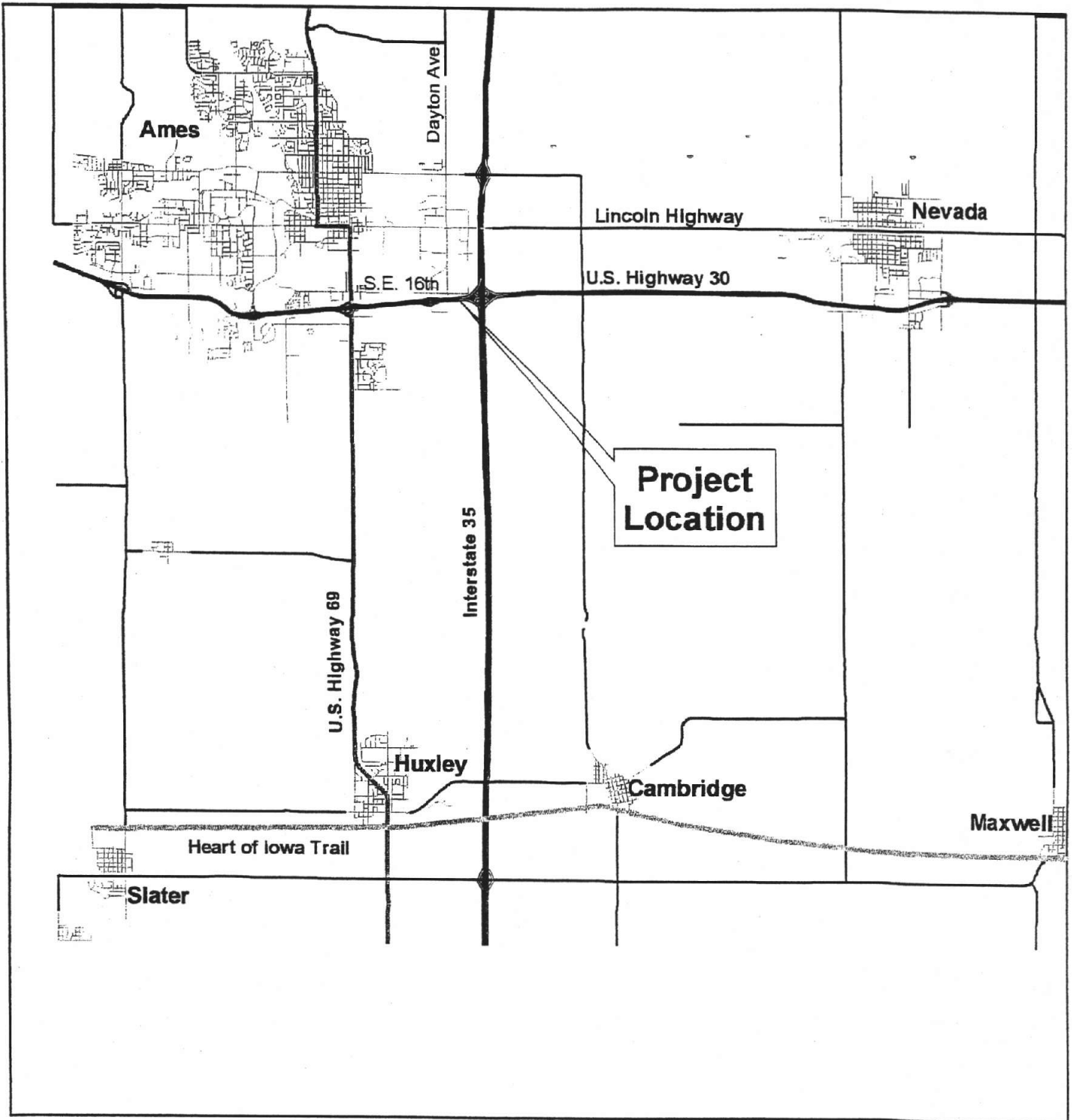
Type of Work: Trails, Landscaping, and Other Scenic Beautification

Map (*Please include a map indicating project location.*)

### PROJECT COST INFORMATION

Total Estimated Cost:	\$ <u>1,006,000</u>
Statewide Enhancement:	\$ <u>683,000</u>
Local Match:	\$ <u>293,000</u>
Other:	\$ <u>30,000 (IDOT/IDNR Planting Grant)</u>

**B. LOCATION MAP**



**Location Map  
Ames Southeast Entryway**



# AMES AREA METROPOLITAN PLANNING ORGANIZATION

## FEDERAL FISCAL YEARS 2008-2011 TRANSPORTATION IMPROVEMENT PROGRAM

### NEW PROJECT INFORMATION FORM

Project Sponsor Government: City of Ames

Federal Funding Source:

- Surface Transportation Program  
 Highway Bridge Replacement and Rehabilitation Program

Federal Fiscal Year:

- Federal Fiscal Year 2008 (October 1, 2007 – September 30, 2008)  
 Federal Fiscal Year 2009 (October 1, 2008 – September 30, 2009)  
 Federal Fiscal Year 2010 (October 1, 2009 – September 30, 2010)  
 Federal Fiscal Year 2011 (October 1, 2010 – September 30, 2011)

Route or Street Name: North Dakota Avenue

Termini: 600' south of Delaware Avenue to Ontario Street

Bridge Number (For Bridge Projects Only): \_\_\_\_\_

Length: 0.57 miles

Type of Work: Pavement Rehabilitation

Map (*Please include a map indicating project location.*)

### PROJECT COST INFORMATION

Total Estimated Cost: \$ 1,300,000

Federal-Aid: \$ 782,998

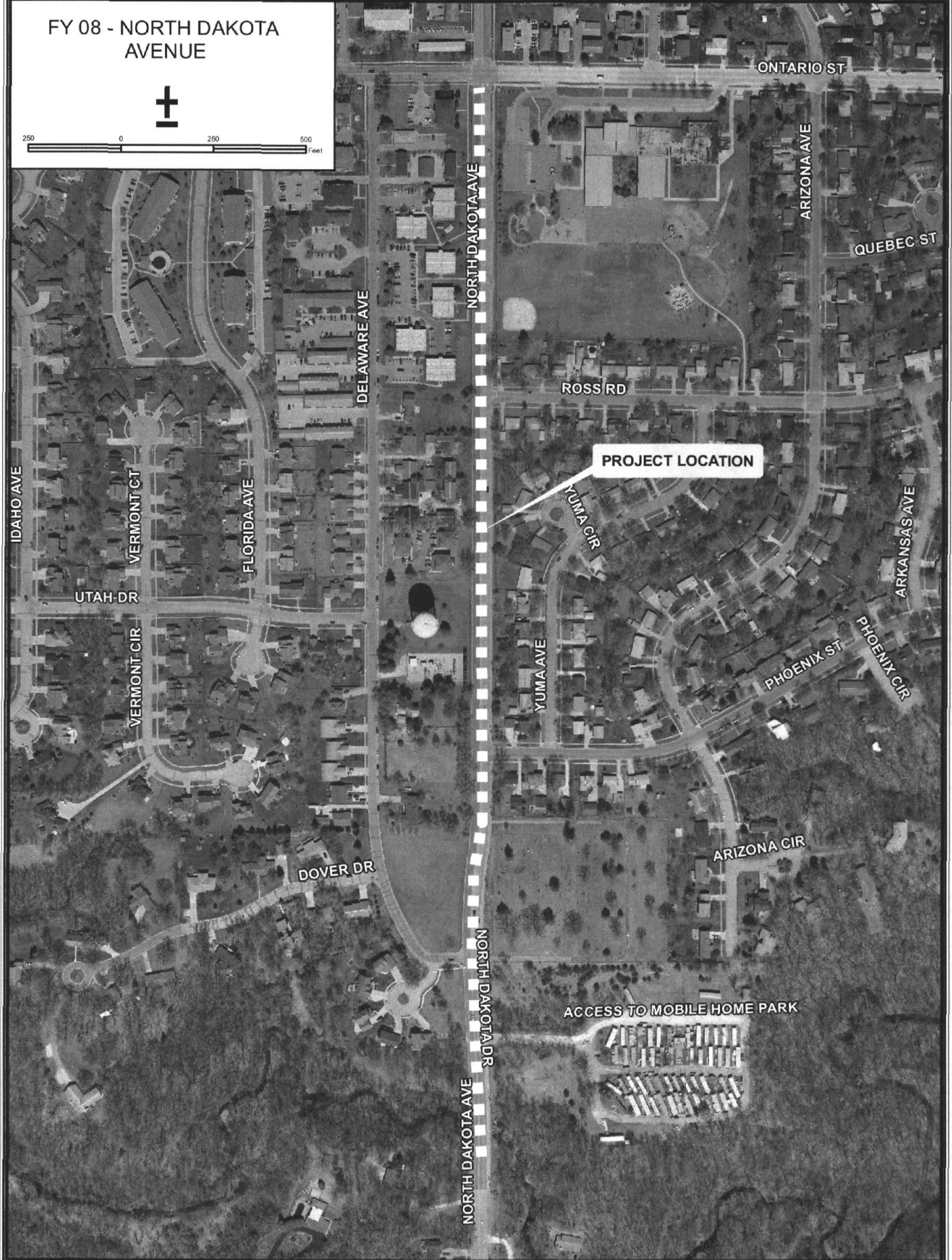
Local Match: \$ 517,002

Other: \$ N/A

FY 08 - NORTH DAKOTA AVENUE



250 0 250 500 Feet



PROJECT LOCATION

ACCESS TO MOBILE HOME PARK



# AMES AREA METROPOLITAN PLANNING ORGANIZATION

## FEDERAL FISCAL YEARS 2008-2011 TRANSPORTATION IMPROVEMENT PROGRAM

### NEW PROJECT INFORMATION FORM

Project Sponsor Government: City of Ames

Federal Funding Source:

- Surface Transportation Program  
 Highway Bridge Replacement and Rehabilitation Program

Federal Fiscal Year:

- Federal Fiscal Year 2008 (October 1, 2007 – September 30, 2008)  
 Federal Fiscal Year 2009 (October 1, 2008 – September 30, 2009)  
 Federal Fiscal Year 2010 (October 1, 2009 – September 30, 2010)  
 Federal Fiscal Year 2011 (October 1, 2010 – September 30, 2011)

Route or Street Name: Skunk River Trail

Termini: Southeast 16<sup>th</sup> Street to E. Lincoln Way

Bridge Number (For Bridge Projects Only): \_\_\_\_\_

Length: 1.0 miles

Type of Work: Bike Trail Paving

Map (*Please include a map indicating project location.*)

### PROJECT COST INFORMATION

Total Estimated Cost: \$ 323,375

Federal-Aid: \$ 71,178

Local Match: \$ 252,197

Other: \$ 150,000

E LINCOLN WAY

# FY 08- ENHANCEMENT SKUNK RIVER TRAIL



375 0 375 750 Feet

Access to city wells

PROJECT LOCATION

FREEL DR

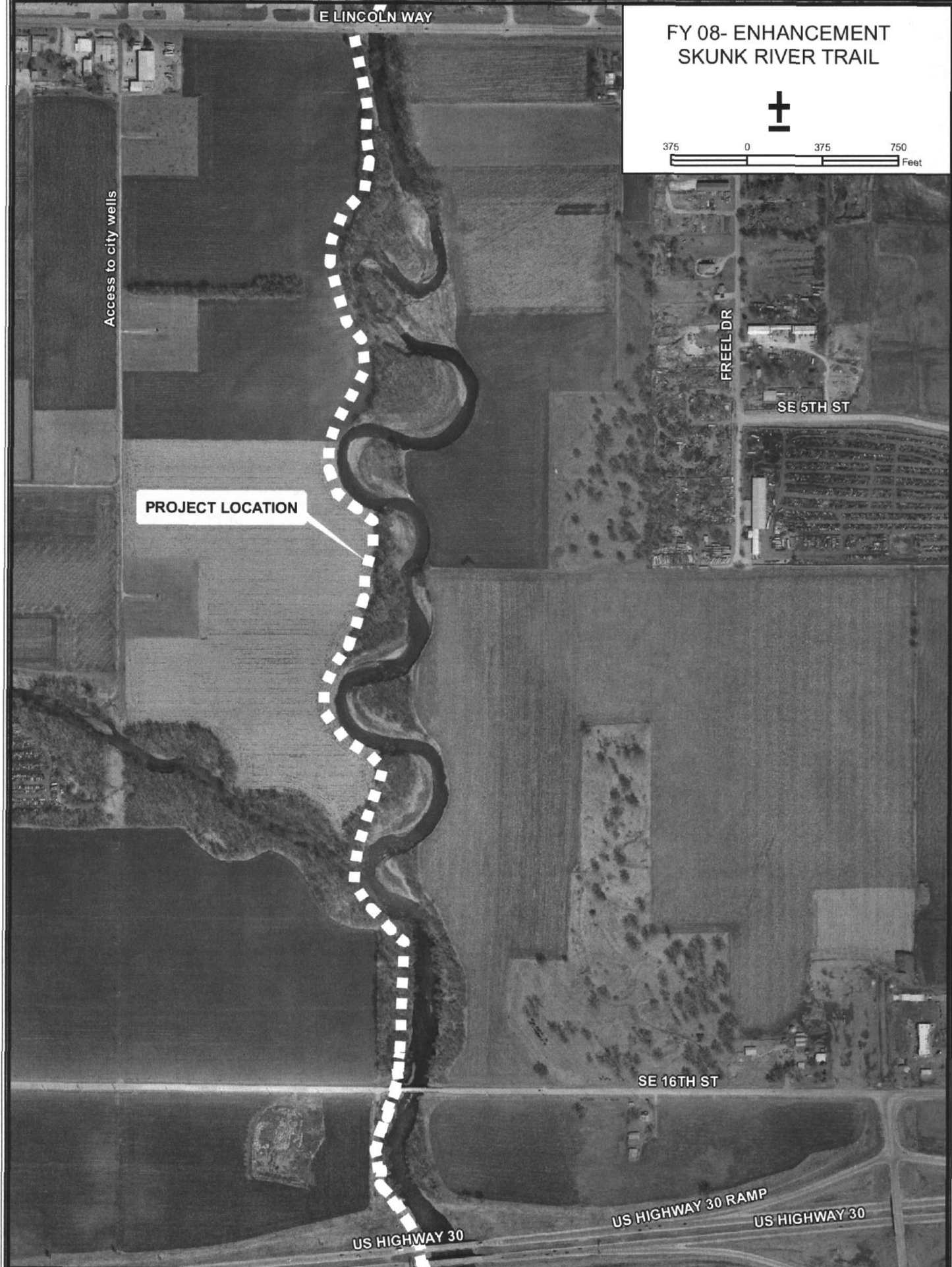
SE 5TH ST

SE 16TH ST

US HIGHWAY 30

US HIGHWAY 30 RAMP

US HIGHWAY 30



# AMES AREA METROPOLITAN PLANNING ORGANIZATION

## FEDERAL FISCAL YEARS 2008-2011 TRANSPORTATION IMPROVEMENT PROGRAM

### NEW PROJECT INFORMATION FORM

Project Sponsor Government: City of Ames

Federal Funding Source:

- Surface Transportation Program  
 Highway Bridge Replacement and Rehabilitation Program

Federal Fiscal Year:

- Federal Fiscal Year 2008 (October 1, 2007 – September 30, 2008)  
 Federal Fiscal Year 2009 (October 1, 2008 – September 30, 2009)  
 Federal Fiscal Year 2010 (October 1, 2009 – September 30, 2010)  
 Federal Fiscal Year 2011 (October 1, 2010 – September 30, 2011)

Route or Street Name: 13<sup>th</sup> Street

Termini: Union Pacific Railroad Overpass to Stange Road

Bridge Number (For Bridge Projects Only): \_\_\_\_\_

Length: 0.48 miles

Type of Work: Pavement Rehabilitation

Map (Please include a map indicating project location.)

### PROJECT COST INFORMATION

Total Estimated Cost: \$ 1,300,000

Federal-Aid: \$ 860,000

Local Match: \$ 440,000

Other: \$ N/A

FY 09 - 13TH STREET



PROJECT LOCATION

13TH ST

ONTARIO ST

ROSS RD

HYLAND AVE

PAMMEL DR

KOOSER DR

ACCESS ROAD

DALEY DR

STANGE RD



# AMES AREA METROPOLITAN PLANNING ORGANIZATION

## FEDERAL FISCAL YEARS 2008-2011 TRANSPORTATION IMPROVEMENT PROGRAM

### NEW PROJECT INFORMATION FORM

Project Sponsor Government: City of Ames

Federal Funding Source:

- Surface Transportation Program (Enhancement)  
 Highway Bridge Replacement and Rehabilitation Program

Federal Fiscal Year:

- Federal Fiscal Year 2008 (October 1, 2007 – September 30, 2008)  
 Federal Fiscal Year 2009 (October 1, 2008 – September 30, 2009)  
 Federal Fiscal Year 2010 (October 1, 2009 – September 30, 2010)  
 Federal Fiscal Year 2011 (October 1, 2010 – September 30, 2011)

Route or Street Name: Skunk River Trail

Termini: Hunziker Youth Sports Complex to Southeast 16<sup>th</sup> Street

Bridge Number (For Bridge Projects Only): \_\_\_\_\_

Length: 0.30 miles

Type of Work: Bike Trail Paving

Map (*Please include a map indicating project location.*)

### PROJECT COST INFORMATION

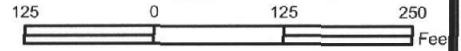
Total Estimated Cost: \$ 200,000

Federal-Aid: \$ 72,526

Local Match: \$ 127,474

Other: \$ N/A

FY 09 - ENHANCEMENT  
SKUNK RIVER TRAIL



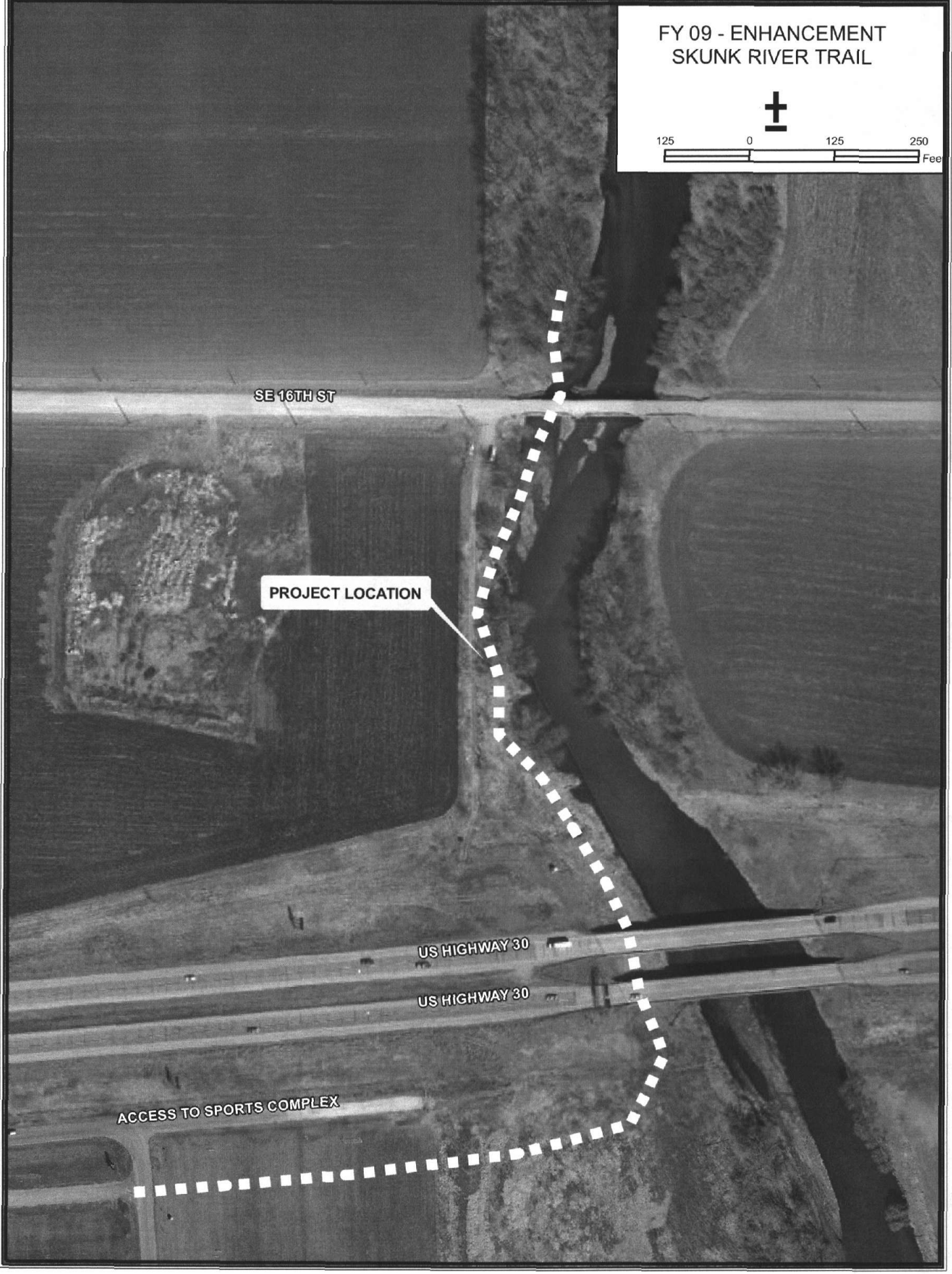
SE 16TH ST

PROJECT LOCATION

US HIGHWAY 30

US HIGHWAY 30

ACCESS TO SPORTS COMPLEX



# AMES AREA METROPOLITAN PLANNING ORGANIZATION

## FEDERAL FISCAL YEARS 2008-2011 TRANSPORTATION IMPROVEMENT PROGRAM

### NEW PROJECT INFORMATION FORM

Project Sponsor Government: City of Ames

Federal Funding Source:

- Surface Transportation Program (Enhancement)  
 Highway Bridge Replacement and Rehabilitation Program

Federal Fiscal Year:

- Federal Fiscal Year 2008 (October 1, 2007 – September 30, 2008)  
 Federal Fiscal Year 2009 (October 1, 2008 – September 30, 2009)  
 Federal Fiscal Year 2010 (October 1, 2009 – September 30, 2010)  
 Federal Fiscal Year 2011 (October 1, 2010 – September 30, 2011)

Route or Street Name: George W. Carver Avenue

Termini: Stange Road to Bloomington Road

Bridge Number (For Bridge Projects Only): \_\_\_\_\_

Length: 0.90 miles

Type of Work: Pavement Rehabilitation

Map (*Please include a map indicating project location.*)

### PROJECT COST INFORMATION

Total Estimated Cost: \$ 860,000

Federal-Aid: \$ 688,000

Local Match: \$ 172,000

Other: \$ N/A

BLOOMINGTON RD

ALMOND RD

HONEYSUCKLE RD

BAYBERRY RD

VALLEY VIEW RD

ASPEN RD

REDBUD CIR

EVERGREEN CIR

GEORGE W CARVER AVE

PROJECT LOCATION

STANGE RD

ASPEN RD

SYCAMORE RD

CYPRESS CIR

VALLEY VIEW CIR

KENT AVE

MAPLEWOOD RD

NORTHRIDGE PKWY

ROSEWOOD CIR

BRISTOL DR

SHERWOOD AVE

CAMDEN AVE

BRADFORD DR

EATON AVE

24TH ST

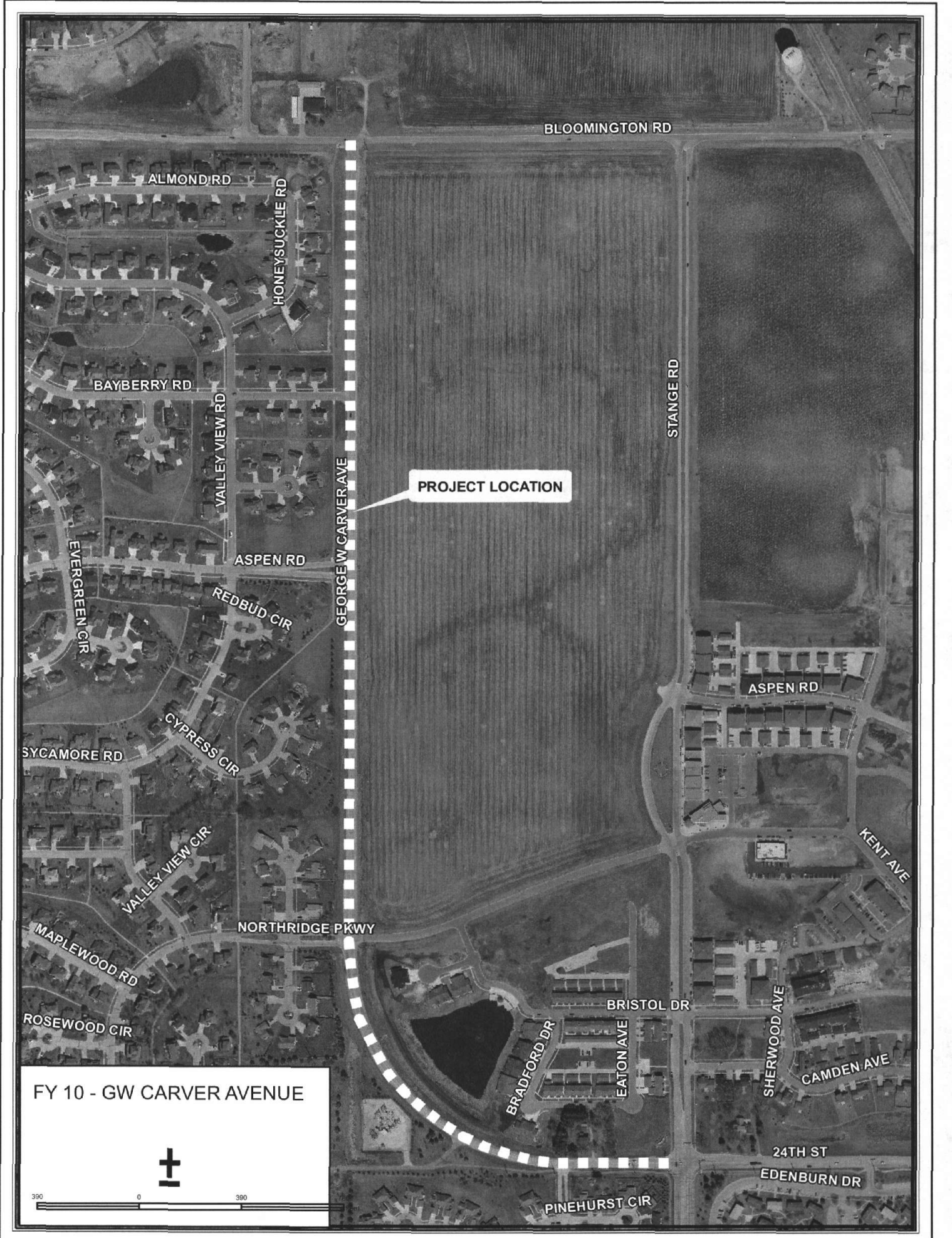
EDENBURN DR

PINEHURST CIR

FY 10 - GW CARVER AVENUE



390 0 390





# AMES AREA METROPOLITAN PLANNING ORGANIZATION

## FEDERAL FISCAL YEARS 2008-2011 TRANSPORTATION IMPROVEMENT PROGRAM

### NEW PROJECT INFORMATION FORM

Project Sponsor Government: City of Ames

Federal Funding Source:

- Surface Transportation Program (Enhancement)  
 Highway Bridge Replacement and Rehabilitation Program

Federal Fiscal Year:

- Federal Fiscal Year 2008 (October 1, 2007 – September 30, 2008)  
 Federal Fiscal Year 2009 (October 1, 2008 – September 30, 2009)  
 Federal Fiscal Year 2010 (October 1, 2009 – September 30, 2010)  
 Federal Fiscal Year 2011 (October 1, 2010 – September 30, 2011)

Route or Street Name: Skunk River Trail

Termini: E. 13<sup>th</sup> Street to Carr Pool

Bridge Number (For Bridge Projects Only): \_\_\_\_\_

Length: 0.40 miles

Type of Work: Bike Trail Paving

Map (*Please include a map indicating project location.*)

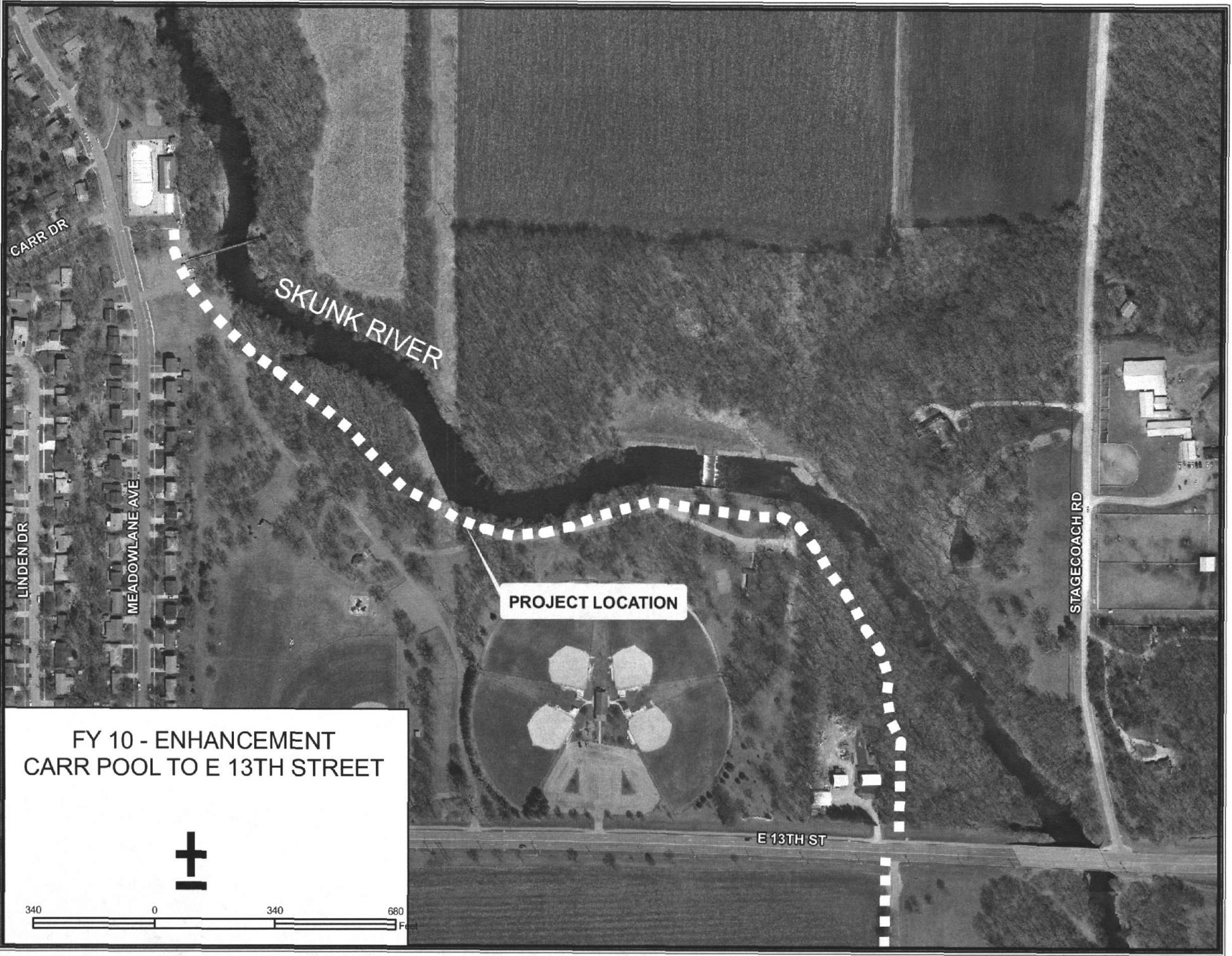
### PROJECT COST INFORMATION

Total Estimated Cost: \$ 225,000

Federal-Aid: \$ 73,372

Local Match: \$ 151,628

Other: \$ N/A



CARR DR

LINDEN DR

MEADOWLANE AVE

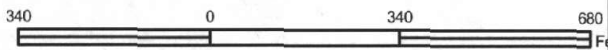
SKUNK RIVER

PROJECT LOCATION

STAGECOACH RD

E 13TH ST

FY 10 - ENHANCEMENT  
CARR POOL TO E 13TH STREET



# AMES AREA METROPOLITAN PLANNING ORGANIZATION

## FEDERAL FISCAL YEARS 2008-2011 TRANSPORTATION IMPROVEMENT PROGRAM

### NEW PROJECT INFORMATION FORM

Project Sponsor Government: City of Ames

Federal Funding Source:

- Surface Transportation Program (Enhancement)  
 Highway Bridge Replacement and Rehabilitation Program

Federal Fiscal Year:

- Federal Fiscal Year 2008 (October 1, 2007 – September 30, 2008)  
 Federal Fiscal Year 2009 (October 1, 2008 – September 30, 2009)  
 Federal Fiscal Year 2010 (October 1, 2009 – September 30, 2010)  
 Federal Fiscal Year 2011 (October 1, 2010 – September 30, 2011)

Route or Street Name: Grand Avenue

Termini: South 16<sup>th</sup> Street to Squaw Creek Drive

Bridge Number (For Bridge Projects Only): \_\_\_\_\_

Length: 0.75 miles

Type of Work: Grade and Pave

Map (*Please include a map indicating project location.*)

### PROJECT COST INFORMATION

Total Estimated Cost: \$ 7,100,000

Federal-Aid: \$ 865,000

Local Match: \$ 6,235,000

Other: \$ ---

FY 11  
GRAND AVENUE EXTENSION



250 0 250 500  
Feet



PROJECT LOCATION

S 16TH ST

# AMES AREA METROPOLITAN PLANNING ORGANIZATION

## FEDERAL FISCAL YEARS 2008-2011 TRANSPORTATION IMPROVEMENT PROGRAM

### NEW PROJECT INFORMATION FORM

Project Sponsor Government: City of Ames

Federal Funding Source:

- Surface Transportation Program (Enhancement)  
 Highway Bridge Replacement and Rehabilitation Program

Federal Fiscal Year:

- Federal Fiscal Year 2008 (October 1, 2007 – September 30, 2008)  
 Federal Fiscal Year 2009 (October 1, 2008 – September 30, 2009)  
 Federal Fiscal Year 2010 (October 1, 2009 – September 30, 2010)  
 Federal Fiscal Year 2011 (October 1, 2010 – September 30, 2011)

Route or Street Name: Skunk River Trail

Termini: E. Lincoln Way to East 13<sup>th</sup> Street

Bridge Number (For Bridge Projects Only): \_\_\_\_\_

Length: 0.94 miles

Type of Work: Bike Trail Paving

Map (*Please include a map indicating project location.*)

### PROJECT COST INFORMATION

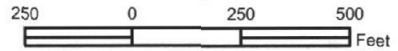
Total Estimated Cost: \$ 345,000

Federal-Aid: \$ 73,372

Local Match: \$ 271,628

Other: \$ N/A

FY 11 - ENHANCEMENT  
SKUNK RIVER TRAIL



E 13TH ST

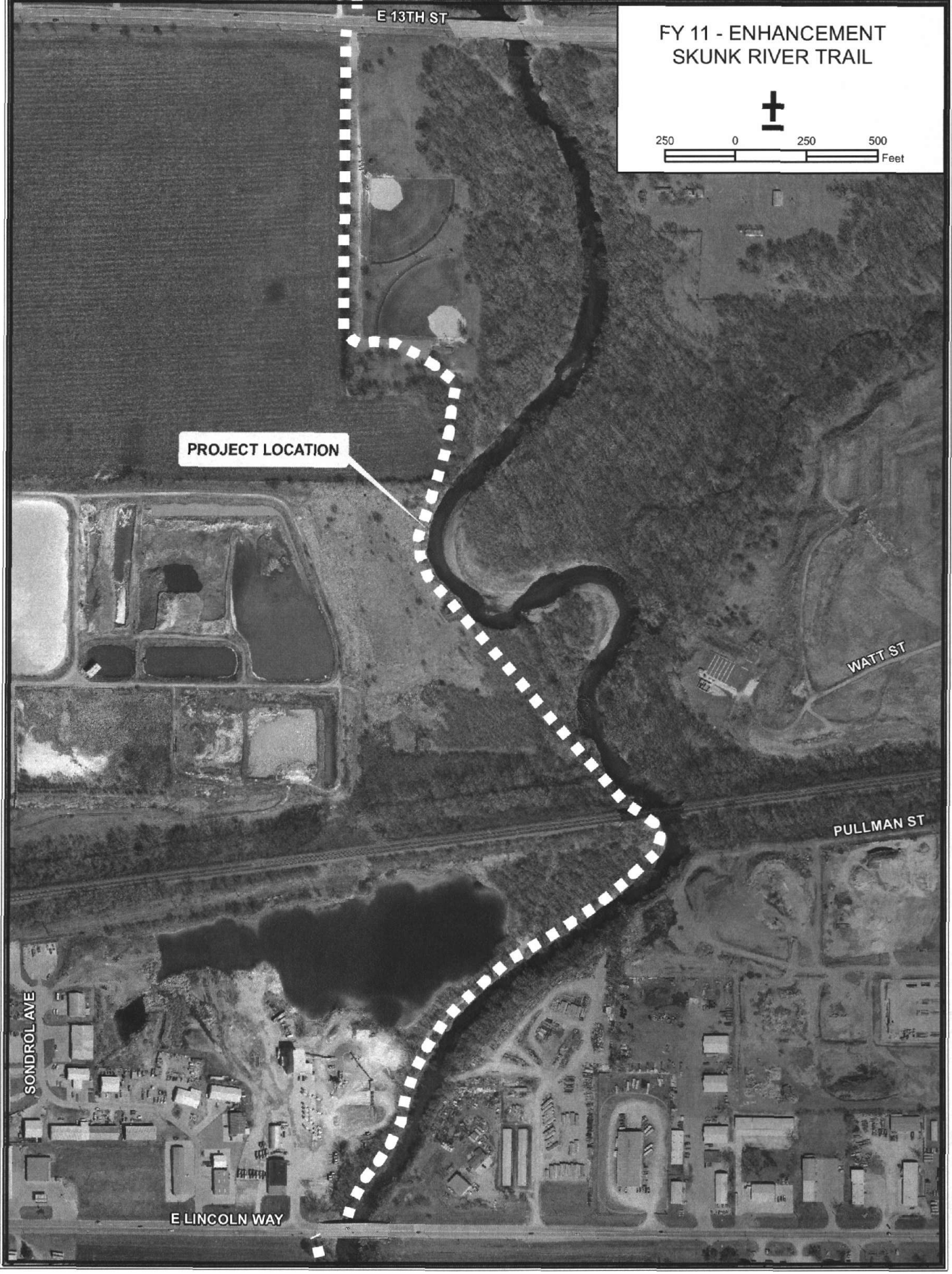
PROJECT LOCATION

WATT ST

PULLMAN ST

SONDROL AVE

E LINCOLN WAY



**Ames Area Metropolitan Planning Organization**  
 FY 2008-2011 TIP Summary of FHWA Program

<b>Surface Transportation Program</b>				<b>Total Cost x 1000</b>				<b>Federal Participation x 1000</b>			
<b>Location</b>	<b>Termini</b>	<b>Sponsor</b>	<b>Type of Work</b>	<b>2008</b>	<b>2009</b>	<b>2010</b>	<b>2011</b>	<b>2008</b>	<b>2009</b>	<b>2010</b>	<b>2011</b>
Areawide	--	City of Ames	SUDAS	3.1	3.1	3.1	3.1	3.1	3.1	3.1	3.1
Areawide	--	City of Ames	Pavement Management	5.2	5.2	5.2	5.2	5.2	5.2	5.2	5.2
North Dakota Avenue	Delaware to Ontario	City of Ames	Pavement Rehabilitation	1,300				783			
13th Street	UPRR to Stange Road	City of Ames	Pavement Rehabilitation		1,300				860		
G.W. Carver Avenue	Stange Rd. to Bloomington	City of Ames	Pavement Rehabilitation			860				688	
Grand Avenue	South 16th Street to Squaw Creek Drive	City of Ames	Grade and Pave				7,100				865
Target Funding		FHWA						791	868	873	873

<b>Enhancements</b>				<b>Total Cost x 1000</b>				<b>Federal Participation x 1000</b>			
<b>Location</b>	<b>Termini</b>	<b>Sponsor</b>	<b>Type of Work</b>	<b>2008</b>	<b>2009</b>	<b>2010</b>	<b>2011</b>	<b>2008</b>	<b>2009</b>	<b>2010</b>	<b>2011</b>
Skunk River Trail	SE 16th Street to E. Lincoln Way	City of Ames	Ped/Bike Paving	323				71			
Skunk River Trail	Hunziker Youth Sports Complex to SE 16th Street	City of Ames	Ped/Bike Paving		200				73		
Skunk River Trail	E. 13th Street to Carr Pool	City of Ames	Ped/Bike Paving			225				73	
Skunk River Trail	E. Lincoln Way to E. 13th Street	City of Ames	Ped/Bike Paving				345				73
Target Funding		FHWA						71	73	73	73

**Federal Transit**

**Administration**

**Section**



April 12, 2007

Fund Type	System	Project Description	Vehicle Identification or Remarks	Type Exp	Type Project	Total Cost				Federal Participation				2008 STA
						2008	2009	2010	2011	2008	2009	2010	2011	
5307/STA 5303	CyRide AAMPO	General Operations Planning		O O		5,806,892 30,481	6,039,168 31,701	6,280,734 32,969	6,531,964 34,287	\$1,610,455 \$24,385	\$1,713,131 \$25,360	\$1,798,788 \$26,375	\$1,888,727 \$27,430	487,859
5316 5316 5316	CyRide CyRide CyRide	<b>Job Access &amp; Reverse Commute</b> East 13th/LincolnWay/Dayton Commercial/Industrial Area Brown Route Frequency/Hours Expansion Yellow Route Expansion		O O O	Exp Exp Exp	329,700 44,100 4,620	346,185 46,305 4,851	363,494 48,620 5,094	381,669 51,051 5,348	164,850 22,050 2,310	173,093 23,153 2,426	181,747 24,310 2,547	190,834 25,526 2,674	
5317/Local	CyRide	<b>New Freedom</b> One 40' HD bus with camera	966	C	Rep	339,150	356,108	373,913	392,609	98,850	103,793	108,982	114,431	
5310 5310 5310	CyRide CyRide CyRide	<b>Elderly &amp; Persons with Disabilities Program</b> Contracted paratransit service 1 - 158" Light Duty (Diesel, Urban, Cameras) Transit Amenities		O C C		111,013 69,000	134,925 54,752	141,671 57,489	148,755 50,662	88,810 57,270	107,940 45,444	113,337 47,716	119,004 42,049	
5309 5309	CyRide CyRide	<b>Replacement Buses and Bus Equipment</b> 10 - 40' HD buses (Cameras) 6 - 158" Light Duty (Diesel, Urban, Cameras)	869, 926, 927, 933, 934, 980, 981, 983, 985, 990 859, 949, 938, 939, 960, 961	C C	Rep Rep	3,230,000 468,000				2,680,900 388,440				
5309 5309 5309 5309 5309 5309	CyRide CyRide CyRide CyRide CyRide CyRide	<b>Security: Human Health/Safety Threats</b> Scissor Lift for Shop/Maintenance Shop Exhaust Removal System/HVAC System Facility Cameras/Proximity Card Access Steam clean area; hoist and floor repair Vehicle Security System Camera Replacement Storage area air handling replacement Stange Rd/Univ Village traffic control	20 Cameras(20*\$1,333) ; 10 Proximity Cards 2009: (\$8,000*13), 2010: (\$8,000*14)	C C C C C C	Exp Exp Exp Rep Rep Exp	35,000 200,000 56,660	200,000 104,000	112,000 150,000	180,000	28,000 160,000 45,328	0 160,000	89,600 120,000	144,000	
5309 5309 5309 5309	CyRide CyRide CyRide CyRide	<b>Direct Earmarks</b> Garage Rehab and Expansion Phase III (Direct Earmarks) AVL technology, web planner, passenger counters Resurface ISC Commuter Parking ISU North Intermodal Facility		C C C C	Exp/Reh Exp Reh Exp	543,400	564,300 1,632,540 1,000,000	1,000,000	500,000	434,720	451,440 1,175,429 720,000	800,000	400,000	
Total Capital					Total Capital	11,268,016 4,941,210	10,514,833 3,911,699	24,190,984 17,318,402	8,276,345 1,123,270	5,806,368 3,893,508	4,784,407 2,739,305	15,813,402 13,666,298	2,954,675 700,481	

# AMES AREA METROPOLITAN PLANNING ORGANIZATION

## 2008-11 TRANSPORTATION IMPROVEMENT PROGRAM

### SUPPLEMENTAL INFORMATION

#### **Project Selection**

The AAMPO Policy Committee adopted a project rating criteria system as a means of ranking submitted projects. Four projects were submitted and rated. The highest-ranking projects were then presented to the Technical Committee for review and recommendation. A recommendation was then passed on to the Policy Committee for action. Enhancement projects consist of open space trails that have been approved by the bike users and the Parks and Recreation Department.

The Transit Board has approved transit projects from CyRide.

#### **Status of Previously Approved Projects**

The Federal Fiscal Year 2007 highway element project, as approved in the 2007-2010 STIP, is the reconstruction of Beach Avenue from Mortensen Parkway to Lincoln Way. This project was let by IDOT and awarded to Allied Construction, Inc. of Charles City, Iowa. Construction will take place during the summer of 2007.

The FY2006 enhancement element project is a shared use path along the west side of Grand Avenue from Murray Drive to 20<sup>th</sup> Street. Construction is scheduled to be completed in the fall of 2007.

#### **Fiscal Constraint**

The AAMPO FY 2008 programming targets are \$791,301 for the highway element and \$71,178 for the enhancement element. As noted in the TIP, the requested Federal funds for highway and enhancement elements will fully utilize the target amounts. The Ames City Council has programmed these projects in the City of Ames 2007-2012 Capital Improvement Plan for local funding allocation.

The Transit program does not have targets and thus the requests involve significant costs in the anticipation of maximizing the amounts received.

## **Public Participation Process**

A notice advising the public about the draft TIP and TPWP reviewed by the AAMPO Technical Committee will be mailed to 43 neighborhood organization chairpersons, representatives of the Ames Main Street District, Campustown Action Association, NAACP, Friends of Central Iowa Biking, International Student Council at ISU, League of Women Voters and others in accordance with our approved Public Participation Plan.

## **Self Certification**

FHWA, FTA, and IDOT review of the AAMPO is scheduled for May 8, 2007.

## FY 2008 TIP Project Justification

### **Job Access & Reverse Commute**

Commercial/Industrial Area (East 13<sup>th</sup> Street/Lincoln Way/Dayton Avenue): New route would be added to travel to the E. 13<sup>th</sup> Street/Lincoln Way/Dayton Avenue commercial/industrial area of Ames. Service would be provided to businesses such as 3M, Mainstream Living, Mary Greeley Dialysis, Sauer-Danfoss as well as a new proposed mall to open by spring 2009. This area was a priority for a new service route within the Passenger Transportation Development Plan process.

Brown Route Frequency/Hours Expansion: Additional service between campus and North Grand Mall for demand in the Somerset area is needed during the summer weekday and weekday nights. Weekday night would increase to 40-minute frequencies until 9:00pm instead of ending at 7:00 pm and Weekday Summer doubling to 20-minute service.

Yellow Route Expansion: Additional mid-day service to the southeast area of Ames would be increased to operate every 60 minutes alternating between the current route and this southeast area allowing connections directly to ISU campus instead of transferring at Ames City Hall. Only one mid-day trip currently operates to this area.

### **New Freedom**

Heavy Duty Bus Replacement: Replace bus number 966 with 40' heavy duty bus with camera.

### **Elderly and Persons with Disabilities Program**

Contracted Paratransit Service: Purchased Dial-A-Ride transportation service for the City of Ames, therefore, meeting the ADA requirement to provide transportation within a ¼ mile area of any fixed-route. This requirement has been expanded to the entire Ames' city limits.

Light Duty Bus (Diesel): One additional 158" light duty bus, equipped for elderly and disabled accessibility, will be added to the fleet.

### **Replacement Buses and Bus Equipment:**

Heavy Duty Bus Replacement: All listed buses have exceeded FTA guidelines for useful life. These units will be replaced with 40' heavy duty buses, equipped with cameras. Bus numbers are 869, 926, 927, 933, 934, 980, 981, 983, 985, and 990.

Light Duty Bus Replacement: All listed buses have exceeded FTA guidelines for useful life. These units will be replaced with 158" light duty diesel buses, equipped with cameras. Bus numbers are 859, 938, 939, 949, 960, and 961.

### **Security: Human Health/Safety Threats**

Scissor Lift for Shop/Maintenance: Existing service worker lift for overhead facilities maintenance is at the end of its useful life. Lift has become unreliable and does not meet current safety standards.

Shop Exhaust Removal System/HVAC System: Replace current antiquated exhaust system to extract diesel engine exhaust as well as install new HVAC system for better ventilation within the shop area improving health conditions as recommended by a study performed by Worksafe Iowa Department of Occupational and Environmental Health.

Facility Cameras/Proximity Card Access: Purchase 20 cameras for digital recording of the transit property as well as a proximity card access system to monitor access to the facility. Guests within the facility would be restricted to administrative areas unless accompanied by a CyRide employee. These security improvements were recommended by Homeland Security to secure the entire CyRide campus.

### **Direct Earmarks**

Garage Rehabilitation and Expansion, Phase III: A feasibility study was completed in November 2001 that provided for a three Phase expansion and modernization of the CyRide maintenance and office facility. The first phase was completed in December 2003. The second phase is scheduled to begin construction on a new administrative

area for CyRide in April 2007. CyRide is expecting two more earmarks through SAFTEA-LU in 2008 and 2009 under current authorization.

**ADA Compliance:**

Replacement buses will be accessible and are part of the CyRide ADA plan. CyRide is in compliance with ADA regulations and the other elements of the TIP are not related to ADA implementation.

**Passenger Transportation Development Plan (PTDP) Process:**

The transit projects identified within the draft FY2008-2011 TIP have been included within the FY2008-2011 PTDP document meeting the requirement to have all federal and state transit funding within an approved PTDP prior to TIP approval.